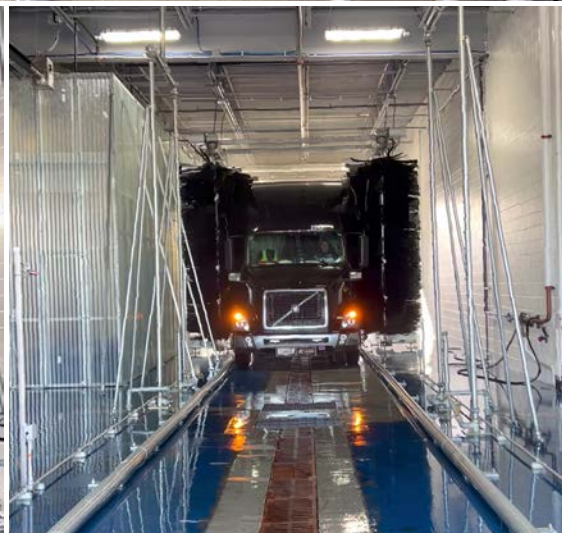
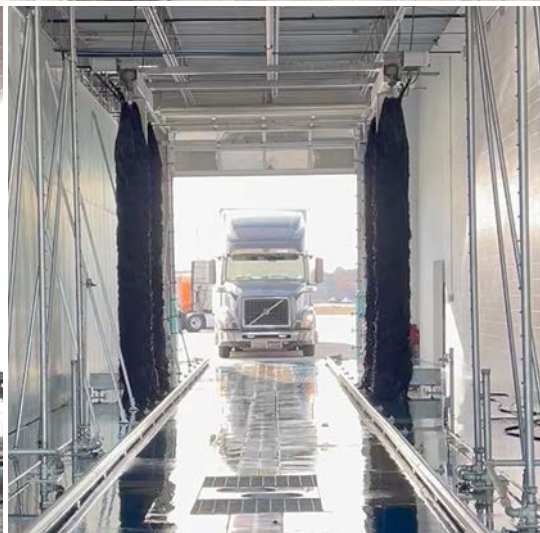
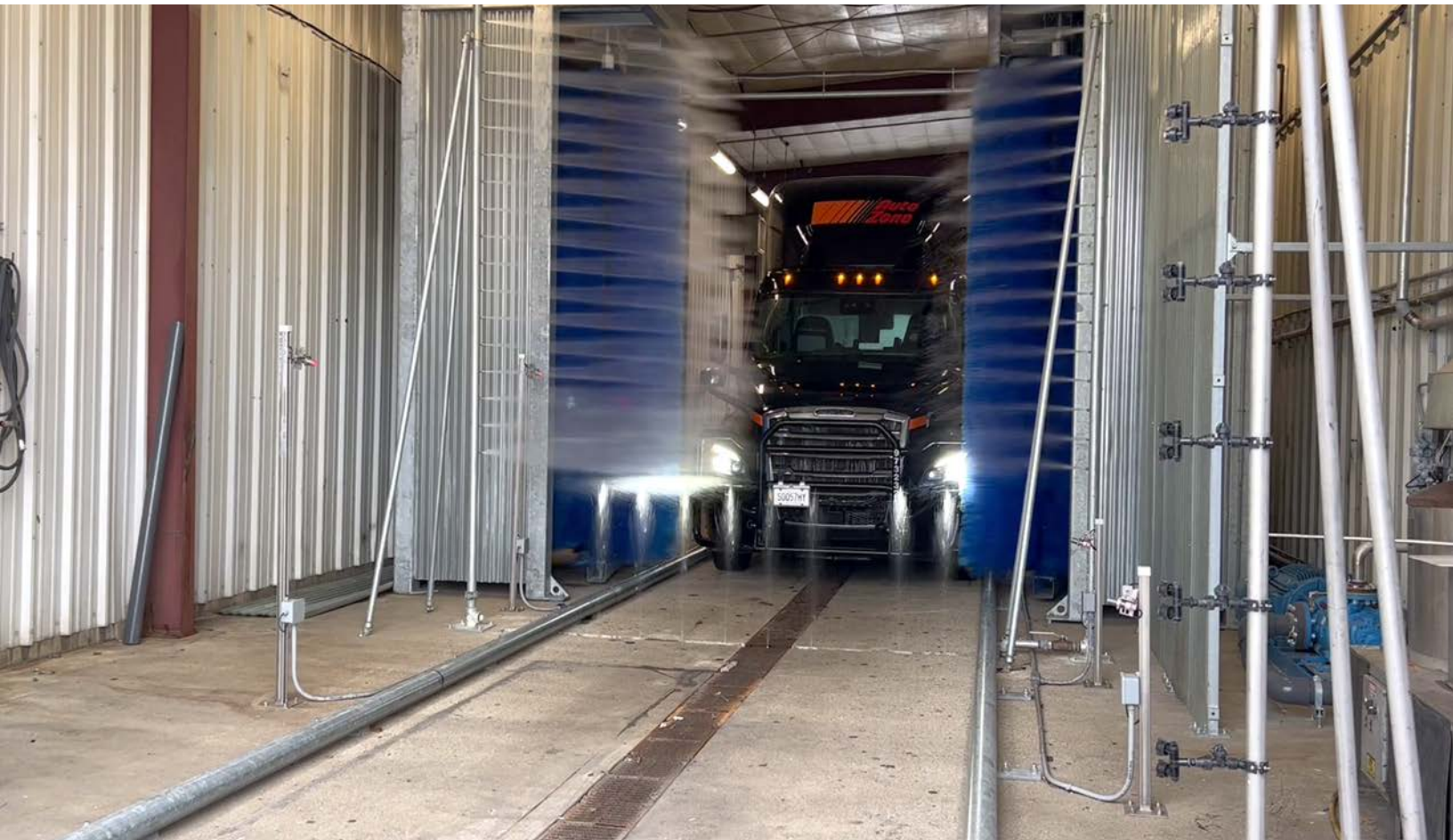


# TRACTOR TRAILER FLEET

## WASH SYSTEMS





# TRACTOR TRAILER FLEET WASH SYSTEMS

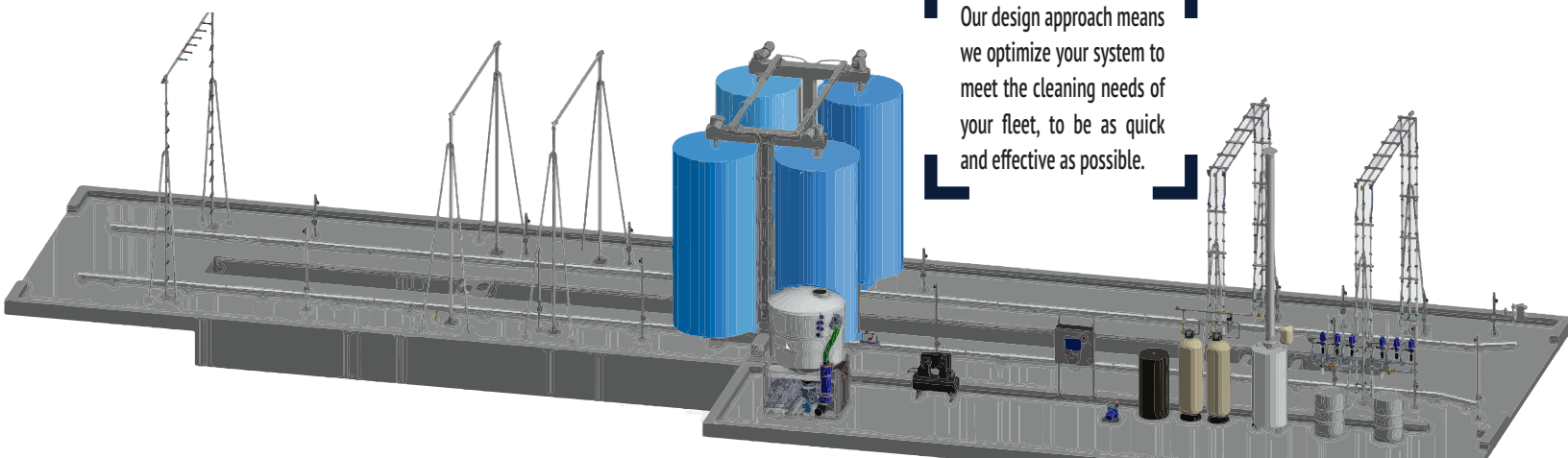
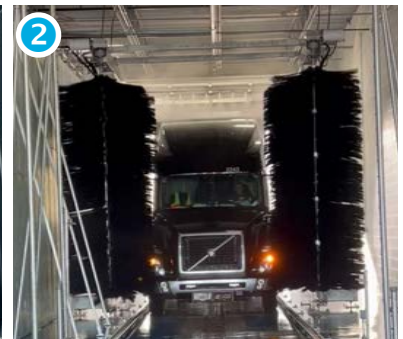
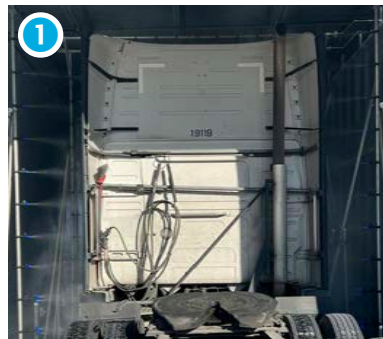
InterClean Fleet Wash systems are effective drive-through wash systems, perfect for providing your fleet with a uniform wash every time. These systems achieve a thorough and complete clean by using a friction brush design paired with touchless technology to ensure every inch of your vehicles are addressed during the wash.

## AN IDEAL SOLUTION FOR

- » Freight Trucks
- » Box Trucks
- » 18-Wheelers
- » Tanker Trucks
- » Pickup Trucks
- » Tractor Trailer
- » Road Trains
- » Vans
- » Flatbeds
- » Reefers
- » Tractor Cabs
- » Paratransit
- » Motor Coaches

## WASH PROCESS

- 1 » The vehicle enters the wash and receives full soap on front, top, sides, and rear.
- 2 » Brushes engage to clean the sides of the tractor and trailer from top to bottom using controlled friction, for the length of the vehicle.
- 3 » Front cleaning of the vehicle is addressed by touchless high-pressure spray nozzles.
- 4 » Spray bar chassis wash cleans the underside of the vehicle.
- 5 » Final rinse arch removes any residual dirt and chemicals.



Our design approach means we optimize your system to meet the cleaning needs of your fleet, to be as quick and effective as possible.

# THE DIFFERENCE IS IN THE DETAILS

## SELECTION OF BRUSH MATERIALS

Soft yet durable brushes clean the vehicle's sides without damaging any surfaces or finishes, even after an extended number of uses.

- » 1mm thick strands of polyethylene thread
- » Non-water absorbing, ultra soft foam



## BRUSH MODULE CONFIGURATIONS

Friction cleaning is completed with two or four counter-rotating brushes, available in three configurations:

- » **Four High:** Two full-length brushes on each side of the wash lane fully engage to clean the vehicle's entire surface, from top to bottom, ensuring complete and consistent coverage along the full length of the cab and trailer.
- » **Two High:** A single full-length brush operates on both sides of the wash lane, offering greater flexibility for systems with limited space or budget constraints, delivering an efficient and thorough cleaning.
- » **Two High & Two Low:** For cabs with delicate fixtures, short brushes clean the lower half, with touchless methods used to clean the top half. Full-length brushes, reserved for cleaning the trailers, engage only after the cab has passed.



InterClean Fleet Wash systems come standard with a two-step, three manifold detergent arch. This ensures a highly effective clean by precisely targeting the detergent application over multiple areas of the vehicle.

- » The first arch applies a low pH detergent from three strategically positioned manifolds, each aimed at a specific vehicle zone: the front, top, sides, and rear. This helps break down residues and dirt.
- » As the vehicle passes through the second arch, a high pH detergent is applied to further dissolve grease, oils, and other stubborn contaminants. This neutralizes the surface and ensures an effective and balanced clean across all surfaces for optimal results.





# STANDARD SYSTEM FEATURES



Features of InterClean's standard Fleet Wash system include:

- » **Dual three-manifold detergent arches:** Separate application of Low and High pH detergents ensure a thorough breakdown and removal of dirt, residues, and buildup.
- » **Gentle yet Effective Friction Cleaning:** Four counter-rotating brushes made from 1mm thick strands of polyethylene, clean vehicles from top to bottom without damaging surfaces or finishes.
- » **Durable and Easy-to-Maintain Rinse Arches:** Stainless steel rinse arches feature water-saving check valves and quick-disconnect fittings for straightforward cleaning and maintenance.
- » **High-Pressure Touchless Cleaning:** Front and rear high-pressure vertical spray bars and fixed-position nozzles, deliver cleaning to the front and rear of vehicles.
- » **Spray Bar Chassis Wash:** Stainless steel spray nozzles dispense high volumes of fresh or reclaimed water, cleaning the undercarriage as the vehicle goes through the wash.
- » **Steel Tire Guides:** 4-inch diameter galvanized steel pipe tire guides available in single or double-height ranging from 4" - 12".
- » **EQ 100 Water Recycling System:** Reclaim 90% of your wash water and reuse it for the chassis wash and high-pressure arches in the next cycle, with a delivery rate of up to 300 GPM per module.



## HSA 1000 BRUSH MODULE



High Side 1000 (HSA 1000) brush modules are single-brush units which can be used in place of standard brush modules for added flexibility with the wash bay layout, or added to any wash system for additional cleaning action.

- » Position adjusts for the width of the vehicle to maintain consistent contact between side surfaces of the vehicle and the brushes.
- » Brush material options include Polyethylene filaments or non-absorbent foam.
- » Available in standard or custom sizes as required by individual wash systems.
- » Independently controlled brush modules for complete cleaning top to bottom.
- » Brush movement is controlled by pneumatic cylinders allowing for precise movement and consistent pressure on the sides of the vehicle.



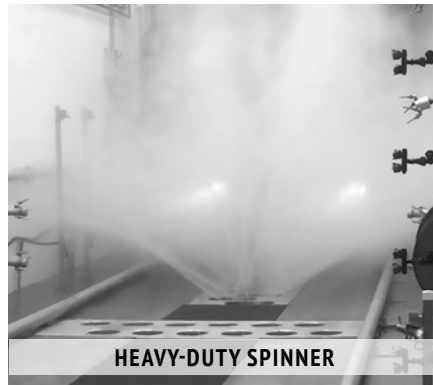
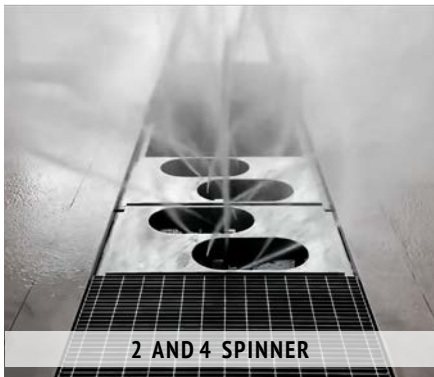
## WASH OPTIONS AND UPGRADES

- » **Tire Wash:** Tire wash bars equipped with four spinner nozzles deliver targeted cleaning to the tires on both sides of the vehicle.
- » **Spinner Arch:** Adjustable stainless steel spinner nozzles provides touchless cleaning for the front and sides of the vehicle supplied with 15 GPM at 300 PSI for a powerful clean with minimal water use.
- » **Chassis Wash:** Frees the under chassis from debris, salt, and other corrosive agents.
- » **R/O System:** A final spot free rinse.
- » **RFID Tags:** Provide wash authorization and easily track wash compliance of your fleet with system RFID tags.
- » **Roof Mop and Blowers:** Prevent residue, streaking, and minimize water run-out.



## CHASSIS WASH

A number of chassis wash options and configurations are available to optimize your fleet wash system.



All spinner chassis wash options are designed for use with the InterClean Centri®Spinner nozzles. Configured in a chassis manifold, these nozzles operate at 15 GPM supplying water at @ 300 PSI to clean and degrease the undercarriage.



Ideal for maintaining the under-chassis of vehicles receiving routine cleanings.

The InterClean FST and CTW type Chassis washes are designed specifically to provide enhanced cleaning, salt removal, and demucking of the vehicle's undercarriage using high-volumes of fresh or reclaimed water.



# EQ 100

## WATER RECLAIM SYSTEM

Recycling wash water greatly decreases the amount of fresh water needed, and disposed of by up to 90% each wash. Water reclamation saves money and enables facilities to operate efficiently in areas with high water and sewer costs, or areas that are highly regulated.

By using the efficient and cost-effective EQ 100 water recycling system, InterClean Equipment is able to employ the full force of huge volumes of pressurized wash water, which creates a cleaning impact that is simply not possible with other automatic vehicle washing systems.

The system is designed to recycle and aerate the wash water automatically, without requiring changing filters or manual supervision, and is capable of operating under the most demanding vehicle wash conditions such as recycling water used to wash garbage trucks.



The modular design requires only 25 ft<sup>2</sup> of space allowing for easy installation using a reclaim pit and almost any site configuration



### FEATURES

System Design	<ul style="list-style-type: none"> <li>The InterClean reclaim system is comprised of a Settling Pit, InterScreen® maintenance free filter, and the EQ Module.</li> <li>The modular footprint ensures that the equipment can be precisely configured at the factory to require a small footprint on-site.</li> <li>The module is pre-wired, pre-plumbed and mounted on a skid.</li> </ul>				
Settling Pit	<ul style="list-style-type: none"> <li>Designed to promote separation of solids from the water.</li> <li>Continuously aerated by the recirculation pump to prevent unwanted odors.</li> </ul>				
Filtration	<ul style="list-style-type: none"> <li>Maintenance free stainless steel InterScreen® filter is mounted in the settling pit supplying initial filtration.</li> <li>Cyclonic filtering mechanisms incorporated with module to further filter the water before delivering it to the high-pressure pump.</li> </ul>				
Treatment	<ul style="list-style-type: none"> <li>Module comes equipped with bioremediation system to allow for enhanced water treatment capability.</li> <li>The system uses no chemicals or additives and is environmentally sustainable.</li> </ul>				
Dimensions	<ul style="list-style-type: none"> <li>60" (150 cm) wide x 60" (150 cm) long x 102" (260 cm) tall per unit</li> </ul>				
<table border="1" style="width: 100%;"> <tr> <th style="width: 50%;">Recycling Capacity</th> <th style="width: 50%;">High-Pressure Capacity for Reclaimed Water</th> </tr> <tr> <td style="text-align: center;">• 300 GPM (1250 l/m) continuously per unit</td> <td style="text-align: center;">• 50-300 GPM (200-1250 l/m) continuously per unit</td> </tr> </table>		Recycling Capacity	High-Pressure Capacity for Reclaimed Water	• 300 GPM (1250 l/m) continuously per unit	• 50-300 GPM (200-1250 l/m) continuously per unit
Recycling Capacity	High-Pressure Capacity for Reclaimed Water				
• 300 GPM (1250 l/m) continuously per unit	• 50-300 GPM (200-1250 l/m) continuously per unit				



INTERCLEAN EQUIPMENT, LLC  
709 JAMES L. HART PARKWAY  
YPSILANTI, MI 48197 USA

PHONE: +1 (734) 961 3300  
FAX: +1 (734) 961 0092  
U.S. AND CANADA:  
+1 (800) 468-3725

EMAIL: SALES@INTERCLEAN.COM  
TECHSUPP@INTERCLEAN.COM  
WEBSITE: INTERCLEAN.COM